

ARHGEF19 Polyclonal Antibody

Catalog No. E-AB-30555

Note: Centrifuge before opening to ensure complete recovery of vial contents.

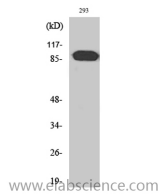
Description

Reactivity	Human
Immunogen	Synthesized peptide derived from the Internal region of human ARHGEF19
Host	Rabbit
Isotype	IgG
Purification	Affinity purification
Buffer	PBS with 0.02% sodium azide, 0.5% protective protein and 50% glycerol pH 7.4.

Applications Recommended Dilution

WB	1:500-1:2000
IHC	1:100-1:300
ELISA	1:20000

Data



Western Blot analysis of 293 cells with ARHGEF19
Polyclonal Antibody.
Observed Mw:90kDa
Calculated Mw:89kDa

Preparation & Storage

Storage Store at -20°C. Avoid freeze / thaw cycles.

Background

GTPase activator for the Rho-type GTPases by converting them to an inactive GDP-bound state.

For Research Use Only