

ARMC6 Polyclonal Antibody

Catalog No. E-AB-30560

Note: Centrifuge before opening to ensure complete recovery of vial contents.

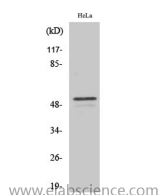
Description

Reactivity	Human,Mouse,Rat
Immunogen	Synthesized peptide derived from the C-terminal region of human ARMC6
Host	Rabbit
Isotype	IgG
Purification	Affinity purification
Buffer	PBS with 0.02% sodium azide,0.5% protective protein and 50% glycerol pH 7.4.

Applications Recommended Dilution

WB	1:500-1:2000
IF	1:200-1:1000
ELISA	1:40000

Data



Western Blot analysis of HeLa cells with ARMC6
Polyclonal Antibody.
Observed Mw:54kDa
Calculated Mw:54kDa

Preparation & Storage

Storage Store at -20°C. Avoid freeze / thaw cycles.

Background

The function of this gene's protein product has not been determined. A related protein in mouse suggests that this protein has a conserved function.

For Research Use Only