

## ACTR3 Polyclonal Antibody

**Catalog No.** E-AB-30564

**Note:** Centrifuge before opening to ensure complete recovery of vial contents.

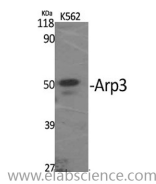
### Description

<b>Reactivity</b>	Human,Mouse,Rat
<b>Immunogen</b>	Synthesized peptide derived from the C-terminal region of human Arp3
<b>Host</b>	Rabbit
<b>Isotype</b>	IgG
<b>Purification</b>	Affinity purification
<b>Buffer</b>	PBS with 0.02% sodium azide, 0.5% protective protein and 50% glycerol, pH7.4

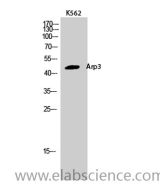
### Applications Recommended Dilution

<b>WB</b>	1:500-1:2000
<b>ELISA</b>	1:40000

### Data



Western Blot analysis of K562 cells with ACTR3 Polyclonal Antibody  
**Observed Mw:47kDa**  
**Calculated Mw:47kDa**



Western Blot analysis of K562 cells with ACTR3 Polyclonal Antibody

### Preparation & Storage

**Storage** Store at -20°C. Avoid freeze / thaw cycles.

### Background

The specific function of this gene has not yet been determined; however, the protein it encodes is known to be a major constituent of the ARP2/3 complex. This complex is located at the cell surface and is essential to cell shape and motility through lamellipodial actin assembly and protrusion. Three transcript variants encoding two different isoforms have been found for this gene.

### For Research Use Only