

ARPP21 Polyclonal Antibody

Catalog No. E-AB-30565

Note: Centrifuge before opening to ensure complete recovery of vial contents.

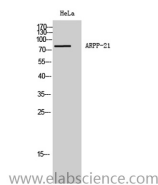
Description

Reactivity	Human,Mouse
Immunogen	Synthesized peptide derived from the Internal region of human ARPP-21
Host	Rabbit
Isotype	IgG
Purification	Affinity purification
Buffer	PBS with 0.02% sodium azide,0.5% protective protein and 50% glycerol pH 7.4.

Applications Recommended Dilution

WB	1:500-1:2000
IHC	1:100-1:300
ELISA	1:5000

Data



Western Blot analysis of HeLa cells using ARPP21 Polyclonal Antibody at dilution of 1:1000.

Observed Mw:80kDa
Calculated Mw:89kDa

Preparation & Storage

Storage Store at -20°C. Avoid freeze / thaw cycles.

Background

This gene encodes a cAMP-regulated phosphoprotein. The encoded protein is enriched in the caudate nucleus and cerebellar cortex. A similar protein in mouse may be involved in regulating the effects of dopamine in the basal ganglia. Alternate splicing results in multiple transcript variants. ARPP21 (CAMP Regulated Phosphoprotein 21) is a Protein Coding gene. Diseases associated with ARPP21 include Suppurative Periapical Periodontitis. GO annotations related to this gene include nucleic acid binding and calmodulin binding. An important paralog of this gene is R3HDM1.

For Research Use Only