

ARRDC1 Polyclonal Antibody

Catalog No. E-AB-30566

Note: Centrifuge before opening to ensure complete recovery of vial contents.

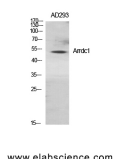
Description

| | |
|---------------------|--|
| Reactivity | Human,Mouse,Rat |
| Immunogen | Synthesized peptide derived from the Internal region of human Arrdc1 |
| Host | Rabbit |
| Isotype | IgG |
| Purification | Affinity purification |
| Conjugation | Unconjugated |
| Buffer | PBS with 0.02% sodium azide, 0.5% protective protein and 50% glycerol, pH7.4 |

Applications Recommended Dilution

| | |
|--------------|--------------|
| WB | 1:500-1:2000 |
| ELISA | 1:20000 |

Data



Western Blot analysis of AD293 cells using Arrdc1 Polyclonal Antibody at dilution of 1:1000.

Observed Mw:48kDa
Calculated Mw:46kDa

Preparation & Storage

Storage Store at -20°C. Avoid freeze / thaw cycles.

Background

ARRDC1 (Arrestin Domain Containing 1) is a Protein Coding gene. An important paralog of this gene is ARRDC4.

For Research Use Only