

ARSG Polyclonal Antibody

Catalog No. E-AB-30570

Note: Centrifuge before opening to ensure complete recovery of vial contents.

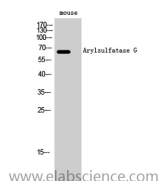
Description

Reactivity	Human,Mouse,Rat
Immunogen	Synthesized peptide derived from the Internal region of human Arylsulfatase G
Host	Rabbit
Isotype	IgG
Purification	Affinity purification
Buffer	PBS with 0.02% sodium azide,0.5% protective protein and 50% glycerol pH 7.4.

Applications Recommended Dilution

WB	1:500-1:2000
IHC	1:100-1:300
ELISA	1:40000

Data



Western Blot analysis of Mouse cells with ARSG
Polyclonal Antibody
Observed Mw:65kDa
Calculated Mw:57kDa

Preparation & Storage

Storage Store at -20°C. Avoid freeze / thaw cycles.

Background

Displays arylsulfatase activity at acidic pH with pseudosubstrates, such as p-nitrocatechol sulfate and also, but with lower activity, p-nitrophenyl sulfate and 4-methylumbelliferyl sulfate.

For Research Use Only