

ARSI Polyclonal Antibody

Catalog No. E-AB-30571

Note: Centrifuge before opening to ensure complete recovery of vial contents.

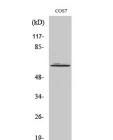
Description

Reactivity	Human,Monkey
Immunogen	Synthesized peptide derived from the Internal region of human Arylsulfatase I
Host	Rabbit
Isotype	IgG
Purification	Affinity purification
Conjugation	Unconjugated
Buffer	PBS with 0.02% sodium azide, 0.5% protective protein and 50% glycerol, pH7.4

Applications Recommended Dilution

WB	1:500-1:2000
IHC	1:100-1:300
IF	1:200-1:1000
ELISA	1:40000

Data



www.elabscience.com

Western Blot analysis of COS7 cells with ARSI
Polyclonal Antibody
Observed Mw:64kDa
Calculated Mw:64kDa

Preparation & Storage

Storage Store at -20°C. Avoid freeze / thaw cycles.

Background

Sulfatases such as ARSI, hydrolyze sulfate esters from sulfated steroids, carbohydrates, proteoglycans, and glycolipids. They are involved in hormone biosynthesis, modulation of cell signaling, and degradation of macromolecules

For Research Use Only