

ARSK Polyclonal Antibody

Catalog No. E-AB-30572

Note: Centrifuge before opening to ensure complete recovery of vial contents.

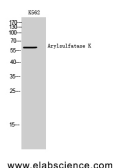
Description

Reactivity	Human,Mouse,Rat
Immunogen	Synthesized peptide derived from the C-terminal region of human Arylsulfatase K
Host	Rabbit
Isotype	IgG
Purification	Affinity purification
Conjugation	Unconjugated
Buffer	PBS with 0.02% sodium azide, 0.5% protective protein and 50% glycerol, pH7.4

Applications Recommended Dilution

WB	1:500-1:2000
IHC	1:100-1:300
ELISA	1:20000

Data



Western Blot analysis of K562 cells with ARSK
Polyclonal Antibody
Observed Mw:62kDa
Calculated Mw:61kDa

Preparation & Storage

Storage Store at -20°C. Avoid freeze / thaw cycles.

Background

Sulfatases (EC 3.1.5.6), such as ARSK, hydrolyze sulfate esters from sulfated steroids, carbohydrates, proteoglycans, and glycolipids. They are involved in hormone biosynthesis, modulation of cell signaling, and degradation of macromolecules.

For Research Use Only