

## ADRA1A Polyclonal Antibody

**Catalog No.** E-AB-30573

*Note:* Centrifuge before opening to ensure complete recovery of vial contents.

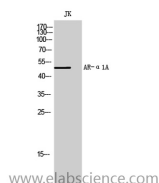
### Description

<b>Reactivity</b>	Human,Mouse,Rat
<b>Immunogen</b>	Synthesized peptide derived from the Internal region of human AR- $\alpha$ 1A
<b>Host</b>	Rabbit
<b>Isotype</b>	IgG
<b>Purification</b>	Affinity purification
<b>Buffer</b>	PBS with 0.02% sodium azide,0.5% protective protein and 50% glycerol pH 7.4.

### Applications Recommended Dilution

<b>WB</b>	1:500-1:2000
<b>IF</b>	1:200-1:1000
<b>ELISA</b>	1:10000

### Data



Western Blot analysis of Jurkat cells with ADRA1A  
Polyclonal Antibody  
**Observed Mw:51kDa**  
**Calculated Mw:51kDa**

### Preparation & Storage

**Storage** Store at -20°C. Avoid freeze / thaw cycles.

### Background

This alpha-adrenergic receptor mediates its action by association with G proteins that activate a phosphatidylinositol-calcium second messenger system. Its effect is mediated by G(q) and G(11) proteins.

### For Research Use Only