

ASF1A Polyclonal Antibody

Catalog No. E-AB-30583

Note: Centrifuge before opening to ensure complete recovery of vial contents.

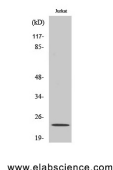
Description

Reactivity	Human, Mouse
Immunogen	Synthesized peptide derived from the Internal region of human Asf1a
Host	Rabbit
Isotype	IgG
Purification	Affinity purification
Conjugation	Unconjugated
Buffer	PBS with 0.02% sodium azide, 0.5% protective protein and 50% glycerol, pH7.4

Applications Recommended Dilution

WB	1:500-1:2000
IF	1:100-1:300
ELISA	1:20000

Data



Western Blot analysis of Jurkat cells with Asf1a
Polyclonal Antibody.
Observed Mw:23kDa
Calculated Mw:23kDa

Preparation & Storage

Storage Store at -20°C. Avoid freeze / thaw cycles.

Background

This gene encodes a member of the H3/H4 family of histone chaperone proteins and is similar to the anti-silencing function-1 gene in yeast. The protein is a key component of a histone donor complex that functions in nucleosome assembly. It interacts with histones H3 and H4, and functions together with a chromatin assembly factor during DNA replication and repair.

For Research Use Only