

MAP3K5 Polyclonal Antibody

Catalog No. E-AB-30585

Note: Centrifuge before opening to ensure complete recovery of vial contents.

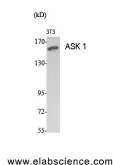
Description

Reactivity	Human
Immunogen	Synthesized peptide derived from human ASK 1 around the non-phosphorylation site of Ser83.
Host	Rabbit
Isotype	IgG
Purification	Affinity purification
Conjugation	Unconjugated
Buffer	PBS with 0.02% sodium azide, 0.5% protective protein and 50% glycerol, pH7.4

Applications Recommended Dilution

WB	1:500-1:2000
IHC	1:100-1:300
ELISA	1:20000

Data



Western Blot analysis of 3T3 cells using MAP3K5
Polyclonal Antibody at dilution of 1:1000.
Calculated Mw:155kDa

Preparation & Storage

Storage Store at -20°C. Avoid freeze / thaw cycles.

Background

Component of a protein kinase signal transduction cascade. Phosphorylates and activates MAP2K4 and MAP2K6, which in turn activate the JNK and p38 MAP kinases, respectively. Overexpression induces apoptotic cell death.

For Research Use Only