

## ATXN2L Polyclonal Antibody

**Catalog No.** E-AB-30589

*Note:* Centrifuge before opening to ensure complete recovery of vial contents.

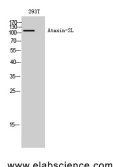
### Description

<b>Reactivity</b>	Human
<b>Immunogen</b>	Synthesized peptide derived from the Internal region of human Ataxin-2L
<b>Host</b>	Rabbit
<b>Isotype</b>	IgG
<b>Purification</b>	Affinity purification
<b>Conjugation</b>	Unconjugated
<b>Buffer</b>	PBS with 0.02% sodium azide, 0.5% protective protein and 50% glycerol, pH7.4

### Applications Recommended Dilution

<b>WB</b>	1:500-1:2000
<b>ELISA</b>	1:20000

### Data



Western Blot analysis of 293T cells using ATXN2L Polyclonal Antibody at dilution of 1:2000.

**Observed Mw:113kDa**  
**Calculated Mw:113kDa**

### Preparation & Storage

**Storage** Store at -20°C. Avoid freeze / thaw cycles.

### Background

This gene encodes an ataxin type 2 related protein of unknown function. This protein is a member of the spinocerebellar ataxia (SCAs) family, which is associated with a complex group of neurodegenerative disorders. Several alternatively spliced transcripts encoding different isoforms have been found for this gene. ATXN2L (Ataxin 2 Like) is a Protein Coding gene. GO annotations related to this gene include poly(A) RNA binding. An important paralog of this gene is ATXN2.

### For Research Use Only