

## ATF5 Polyclonal Antibody

**Catalog No.** E-AB-30595

*Note:* Centrifuge before opening to ensure complete recovery of vial contents.

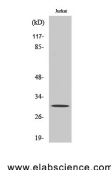
### Description

<b>Reactivity</b>	Human,Mouse,Rat
<b>Immunogen</b>	Synthesized peptide derived from the C-terminal region of human ATF-5
<b>Host</b>	Rabbit
<b>Isotype</b>	IgG
<b>Purification</b>	Affinity purification
<b>Conjugation</b>	Unconjugated
<b>Buffer</b>	PBS with 0.02% sodium azide, 0.5% protective protein and 50% glycerol, pH7.4

### Applications Recommended Dilution

<b>WB</b>	1:500-1:2000
<b>IHC</b>	1:100-1:300
<b>ELISA</b>	1:5000

### Data



Western Blot analysis of Jurkat cells using ATF5 Polyclonal Antibody at dilution of 1:1000.

**Observed Mw:31kDa**  
**Calculated Mw:31kDa**

### Preparation & Storage

**Storage** Store at -20°C. Avoid freeze / thaw cycles.

### Background

ATF5 or Activating transcription factor 5, binds to cAMP inducible promoters and is involved in gene transcription. This protein binds the cAMP response element (CRE) (consensus: 5'-GTGACGT[AC][AG]-3'), a sequence present in many viral and cellular promoters. ATF5 plays a role in inhibition of nerve growth factor induced neuronal outgrowth and regulation of neurogenesis.

### For Research Use Only