

ATPAF2 Polyclonal Antibody

Catalog No. E-AB-30606

Note: Centrifuge before opening to ensure complete recovery of vial contents.

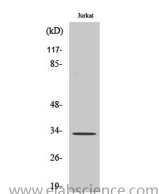
Description

Reactivity	Human,Mouse
Immunogen	Synthesized peptide derived from the Internal region of human ATPAF2
Host	Rabbit
Isotype	IgG
Purification	Affinity purification
Buffer	PBS with 0.02% sodium azide,0.5% protective protein and 50% glycerol pH 7.4.

Applications Recommended Dilution

WB	1:500-1:2000
ELISA	1:40000

Data



Western Blot analysis of Jurkat cells with ATPAF2
Polyclonal Antibody.
Observed Mw:35kDa
Calculated Mw:33kDa

Preparation & Storage

Storage Store at -20°C. Avoid freeze / thaw cycles.

Background

This gene encodes an assembly factor for the F(1) component of the mitochondrial ATP synthase. This protein binds specifically to the F1 alpha subunit and is thought to prevent this subunit from forming nonproductive homooligomers during enzyme assembly. This gene is located within the Smith-Magenis syndrome region on chromosome 17. An alternatively spliced transcript variant has been described, but its biological validity has not been determined. ATPAF2 (ATP Synthase Mitochondrial F1 Complex Assembly Factor 2) is a Protein Coding gene. Diseases associated with ATPAF2 include Mitochondrial Complex V Deficiency, Nuclear Type 1 and Isolated Atp Synthase Deficiency.

For Research Use Only