

AVEN Polyclonal Antibody

Catalog No. E-AB-30612

Note: Centrifuge before opening to ensure complete recovery of vial contents.

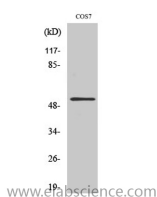
Description

Reactivity	Human,Monkey
Immunogen	Synthesized peptide derived from the C-terminal region of human Aven
Host	Rabbit
Isotype	IgG
Purification	Affinity purification
Buffer	PBS with 0.02% sodium azide,0.5% protective protein and 50% glycerol pH 7.4.

Applications Recommended Dilution

WB	1:500-1:2000
IHC	1:100-1:300
IF	1:200-1:1000
ELISA	1:20000

Data



Western Blot analysis of COS7 cells with Aven
Polyclonal Antibody.
Observed Mw:55kDa
Calculated Mw:39kDa

Preparation & Storage

Storage Store at -20°C. Avoid freeze / thaw cycles.

Background

Aven binds to both Bcl-x(L) and the caspase regulator Apaf-1, which can support that Bcl-x(L) inhibits cell death at a late (postmitochondrial) step in the death pathway. Identified in a yeast two-hybrid screen, Aven inhibited the proteolytic activation of caspases in a cell-free extract and suppressed apoptosis induced by Apaf-1 plus caspase-9. Expressing highly in the testis, ovary, and thymus.

For Research Use Only