

## CEP131 Polyclonal Antibody

**Catalog No.** E-AB-30615

*Note:* Centrifuge before opening to ensure complete recovery of vial contents.

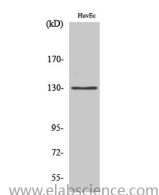
### Description

<b>Reactivity</b>	Human
<b>Immunogen</b>	Synthesized peptide derived from the Internal region of human AZI1
<b>Host</b>	Rabbit
<b>Isotype</b>	IgG
<b>Purification</b>	Affinity purification
<b>Buffer</b>	PBS with 0.02% sodium azide, 0.5% protective protein and 50% glycerol pH 7.4.

### Applications Recommended Dilution

<b>WB</b>	1:500-1:2000
<b>IHC</b>	1:100-1:300
<b>ELISA</b>	1:40000

### Data



Western Blot analysis of HuvEc cells with CEP131  
Polyclonal Antibody  
**Observed Mw:130kDa**  
**Calculated Mw:122kDa**

### Preparation & Storage

**Storage** Store at -20°C. Avoid freeze / thaw cycles.

### Background

CEP131 (Centrosomal Protein 131) is a Protein Coding gene. Among its related pathways are Regulation of PLK1 Activity at G2/M Transition and Organelle biogenesis and maintenance. GO annotations related to this gene include protein homodimerization activity and protein complex binding.

### For Research Use Only