

BAG4 Polyclonal Antibody

Catalog No. E-AB-30622

Note: Centrifuge before opening to ensure complete recovery of vial contents.

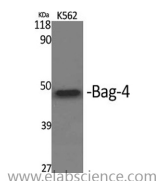
Description

Reactivity	Human,Mouse,Rat
Immunogen	Synthesized peptide derived from the C-terminal region of human Bag-4.
Host	Rabbit
Isotype	IgG
Purification	Affinity purification
Buffer	PBS with 0.02% sodium azide,0.5% protective protein and 50% glycerol pH 7.4.

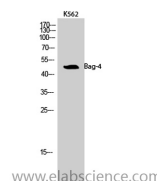
Applications Recommended Dilution

WB	1:500-1:2000
IHC	1:100-1:300
ELISA	1:40000

Data



Western Blot analysis of K562 cells with BAG4 Polyclonal Antibody
Observed Mw:50kDa
Calculated Mw:50kDa



Western Blot analysis of K562 cells with BAG4 Polyclonal Antibody

Preparation & Storage

Storage Store at -20°C. Avoid freeze / thaw cycles.

Background

The protein encoded by this gene is a member of the BAG1-related protein family. BAG1 is an anti-apoptotic protein that functions through interactions with a variety of cell apoptosis and growth related proteins including BCL-2, Raf-protein kinase, steroid hormone receptors, growth factor receptors and members of the heat shock protein 70 kDa family. This protein contains a BAG domain near the C-terminus, which could bind and inhibit the chaperone activity of Hsc70/Hsp70. This protein was found to be associated with the death domain of tumor necrosis factor receptor type 1 (TNF-R1) and death receptor-3 (DR3), and thereby negatively regulates downstream cell death signaling.

For Research Use Only