

## BMP2 Polyclonal Antibody

Catalog No. E-AB-30654

**Note:** Centrifuge before opening to ensure complete recovery of vial contents.

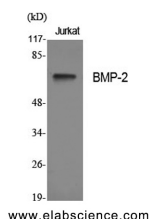
### Description

<b>Reactivity</b>	Human,Mouse,Rat
<b>Immunogen</b>	Synthesized peptide derived from the Internal region of human BMP-2.
<b>Host</b>	Rabbit
<b>Isotype</b>	IgG
<b>Purification</b>	Affinity purification
<b>Conjugation</b>	Unconjugated
<b>Buffer</b>	PBS with 0.02% sodium azide, 0.5% protective protein and 50% glycerol, pH7.4

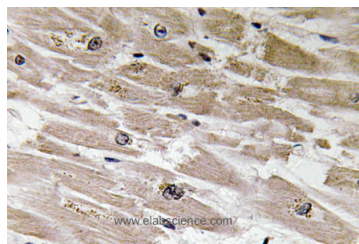
### Applications Recommended Dilution

<b>WB</b>	1:500-1:2000
<b>IHC</b>	1:100-1:300
<b>ELISA</b>	1:20000

### Data



Western Blot analysis of Jurkat cells using BMP2 Polyclonal Antibody at dilution of 1:500.  
**Observed Mw:60kDa**  
**Calculated Mw:45kDa**



Immunohistochemistry of paraffin-embedded Human heart tissue using BMP2 Polyclonal Antibody at dilution of 1:100 .

### Preparation & Storage

**Storage** Store at -20°C. Avoid freeze / thaw cycles.

### Background

This gene encodes a member of the transforming growth factor-beta (TGFB) superfamily. The encoded preproprotein is proteolytically processed to generate each subunit of the disulfide-linked homodimer, which induces bone and cartilage formation.

### For Research Use Only