

BMP3 Polyclonal Antibody

Catalog No. E-AB-30656

Note: Centrifuge before opening to ensure complete recovery of vial contents.

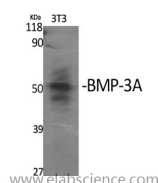
Description

Reactivity	Human
Immunogen	Synthesized peptide derived from the Internal region of human BMP-3A
Host	Rabbit
Isotype	IgG
Purification	Affinity purification
Buffer	PBS with 0.02% sodium azide, 0.5% protective protein and 50% glycerol pH 7.4.

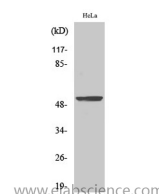
Applications Recommended Dilution

WB	1:500-1:2000
ELISA	1:5000

Data



Western Blot analysis of 3T3 cells with BMP3 Polyclonal Antibody
Observed Mw:55kDa
Calculated Mw:53kDa



Western Blot analysis of Hela cells with BMP3 Polyclonal Antibody

Preparation & Storage

Storage Store at -20°C. Avoid freeze / thaw cycles.

Background

BMP3 belongs to the transforming growth factor-beta (TGFB) superfamily. Bone morphogenic protein, also known as osteogenin, induces bone formation. Negatively regulates bone density. Antagonizes the ability of certain osteogenic BMPs to induce osteoprogenitor differentiation and ossification. Expressed in adult and fetal cartilage. Highly expressed in fracture tissue, particularly in osteoblasts, osteoclasts and chondroblasts.

For Research Use Only