

BMP8A Polyclonal Antibody

Catalog No. E-AB-30659

Note: Centrifuge before opening to ensure complete recovery of vial contents.

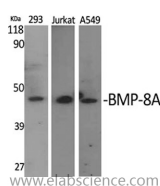
Description

Reactivity	Human
Immunogen	Synthesized peptide derived from the C-terminal region of human BMP-8A
Host	Rabbit
Isotype	IgG
Purification	Affinity purification
Buffer	PBS with 0.02% sodium azide, 0.5% protective protein and 50% glycerol pH 7.4.

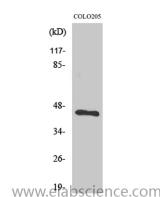
Applications Recommended Dilution

WB	1:500-1:2000
IHC	1:100-1:300
IF	1:200-1:1000
ELISA	1:20000

Data



Western Blot analysis of various cells with BMP8A Polyclonal Antibody
Observed Mw:45kDa
Calculated Mw:45kDa



Western Blot analysis of COLO205 cells with BMP8A Polyclonal Antibody

Preparation & Storage

Storage Store at -20°C. Avoid freeze / thaw cycles.

Background

This gene encodes a secreted ligand of the TGF-beta (transforming growth factor-beta) superfamily of proteins. Ligands of this family bind various TGF-beta receptors leading to recruitment and activation of SMAD family transcription factors that regulate gene expression. The encoded preproprotein is proteolytically processed to generate each subunit of the disulfide-linked homodimer. This protein may play a role in development of the reproductive system. This gene may have arose from a gene duplication event and its gene duplicate is also present on chromosome 1. BMP8A (Bone Morphogenetic Protein 8a) is a Protein Coding gene. Among its related pathways are GPCR Pathway and Phospholipase-C Pathway. GO annotations related to this gene include cytokine activity and transforming growth factor beta receptor binding. An important paralog of this gene is BMP8B.

For Research Use Only