

BMP8B Polyclonal Antibody

Catalog No. E-AB-30660

Note: Centrifuge before opening to ensure complete recovery of vial contents.

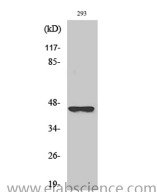
Description

Reactivity	Human
Immunogen	Synthesized peptide derived from the Internal region of human BMP-8B
Host	Rabbit
Isotype	IgG
Purification	Affinity purification
Buffer	PBS with 0.02% sodium azide, 0.5% protective protein and 50% glycerol pH 7.4.

Applications Recommended Dilution

WB	1:500-1:2000
ELISA	1:40000

Data



Western Blot analysis of 293 cells using BMP8B
Polyclonal Antibody at dilution of 1:2000.

Observed Mw:45kDa
Calculated Mw:45kDa

Preparation & Storage

Storage Store at -20°C. Avoid freeze / thaw cycles.

Background

This gene encodes a secreted ligand of the TGF-beta (transforming growth factor-beta) superfamily of proteins. Ligands of this family bind various TGF-beta receptors leading to recruitment and activation of SMAD family transcription factors that regulate gene expression. The encoded preproprotein is proteolytically processed to generate each subunit of the disulfide-linked homodimer. The encoded protein stimulates thermogenesis in brown adipose tissue. Expression of this gene may be downregulated in pancreatic cancer. This gene may have arose from a gene duplication event and its gene duplicate is also present on chromosome 1. BMP8B (Bone Morphogenetic Protein 8b) is a Protein Coding gene. Diseases associated with BMP8B include Achondroplasia and Blue Color Blindness. Among its related pathways are PEDF Induced Signaling and TGF-Beta Pathway. GO annotations related to this gene include cytokine activity and transforming growth factor beta receptor binding. An important paralog of this gene is BMP8A.

For Research Use Only