

MYBL2 Polyclonal Antibody

Catalog No. E-AB-30664

Note: Centrifuge before opening to ensure complete recovery of vial contents.

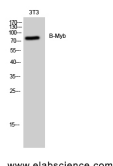
Description

Reactivity	Human,Mouse,Rat
Immunogen	Synthesized peptide derived from human B-Myb around the non-phosphorylation site of Ser577.
Host	Rabbit
Isotype	IgG
Purification	Affinity purification
Conjugation	Unconjugated
Buffer	PBS with 0.02% sodium azide, 0.5% protective protein and 50% glycerol, pH7.4

Applications Recommended Dilution

WB	1:500-1:2000
IF	1:100-1:300
ELISA	1:20000

Data



Western Blot analysis of 3T3 cells using MYBL2 Polyclonal Antibody at dilution of 1:2000.

Observed Mw:80kDa
Calculated Mw:79kDa

Preparation & Storage

Storage Store at -20°C. Avoid freeze / thaw cycles.

Background

MYBL2 encoded by this gene, a member of the MYB family of transcription factor genes, is a nuclear protein involved in cell cycle progression. The encoded protein is phosphorylated by cyclin A/cyclin-dependent kinase 2 during the S-phase of the cell cycle and possesses both activator and repressor activities. It has been shown to activate the cell division cycle 2, cyclin D1, and insulin-like growth factor-binding protein 5 genes. Two transcript variants encoding different isoforms have been found for this gene. MYBL2 (MYB Proto-Oncogene Like 2) is a Protein Coding gene. Diseases associated with MYBL2 include Paraneoplastic Cerebellar Degeneration. Among its related pathways are Cell cycle Cell cycle (generic schema) and HTLV-I infection. GO annotations related to this gene include transcription factor activity, sequence-

For Research Use Only

specific DNA binding and RNA polymerase II core promoter proximal region sequence-specific DNA binding. An important paralog of this gene is MYBL1.