

## BRD3 Polyclonal Antibody

Catalog No. E-AB-30671

**Note:** Centrifuge before opening to ensure complete recovery of vial contents.

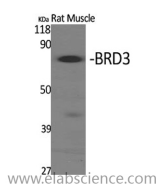
### Description

<b>Reactivity</b>	Human,Mouse
<b>Immunogen</b>	Synthesized peptide derived from the C-terminal region of human BRD3
<b>Host</b>	Rabbit
<b>Isotype</b>	IgG
<b>Purification</b>	Affinity purification
<b>Buffer</b>	PBS with 0.02% sodium azide,0.5% protective protein and 50% glycerol pH 7.4.

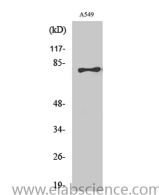
### Applications Recommended Dilution

<b>WB</b>	1:500-1:2000
<b>IHC</b>	1:100-1:300
<b>IF</b>	1:200-1:1000
<b>ELISA</b>	1:20000

### Data



Western Blot analysis of Rat muscle cells with BRD3 Polyclonal Antibody.  
**Observed Mw:90kDa**  
**Calculated Mw:80kDa**



Western Blot analysis of A549 cells with BRD3 Polyclonal Antibody.

### Preparation & Storage

**Storage** Store at -20°C. Avoid freeze / thaw cycles.

### Background

This gene was identified based on its homology to the gene encoding the RING3 protein, a serine/threonine kinase. The gene localizes to 9q34, a region which contains several major histocompatibility complex (MHC) genes. The function of the encoded protein is not known. BRD3 (Bromodomain Containing 3) is a Protein Coding gene. Diseases associated with BRD3 include Foodborne Botulism and Infant Botulism. GO annotations related to this gene include chromatin binding and lysine-acetylated histone binding. An important paralog of this gene is BRD2.

### For Research Use Only