

BRS3 Polyclonal Antibody

Catalog No. E-AB-30675

Note: Centrifuge before opening to ensure complete recovery of vial contents.

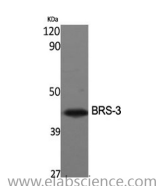
Description

Reactivity	Human
Immunogen	Synthesized peptide derived from the Internal region of human BRS-3
Host	Rabbit
Isotype	IgG
Purification	Affinity purification
Buffer	PBS with 0.02% sodium azide, 0.5% protective protein and 50% glycerol pH 7.4.

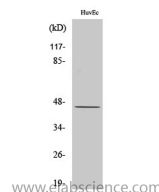
Applications Recommended Dilution

WB	1:500-1:2000
IF	1:200-1:1000
ELISA	1:40000

Data



Western Blot analysis of A549 cells with BRS3 Polyclonal Antibody
Observed Mw:44kDa
Calculated Mw:44kDa



Western Blot analysis of HuvEc cells with BRS3 Polyclonal Antibody

Preparation & Storage

Storage Store at -20°C. Avoid freeze / thaw cycles.

Background

The protein encoded by this gene is a G protein-coupled membrane receptor that binds bombesin-like peptides. This binding results in activation of a phosphatidylinositol-calcium second messenger system, with physiological effects including regulation of metabolic rate, glucose metabolism, and hypertension.

For Research Use Only