

BSX Polyclonal Antibody

Catalog No. E-AB-30678

Note: Centrifuge before opening to ensure complete recovery of vial contents.

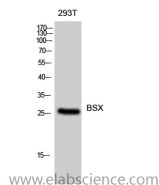
Description

| | |
|---------------------|--|
| Reactivity | Human,Mouse,Rat |
| Immunogen | Synthesized peptide derived from the C-terminal region of human BSX |
| Host | Rabbit |
| Isotype | IgG |
| Purification | Affinity purification |
| Buffer | PBS with 0.02% sodium azide,0.5% protective protein and 50% glycerol pH 7.4. |

Applications Recommended Dilution

| | |
|--------------|--------------|
| WB | 1:500-1:2000 |
| ELISA | 1:5000 |

Data



Western Blot analysis of 293T cells using BSX Polyclonal Antibody at dilution of 1:500.

Observed Mw:26kDa
Calculated Mw:26kDa

Preparation & Storage

Storage Store at -20°C. Avoid freeze / thaw cycles.

Background

BSX (Brain Specific Homeobox) is a Protein Coding gene. Diseases associated with BSX include Jacobsen Syndrome. GO annotations related to this gene include transcription factor activity, sequence-specific DNA binding and sequence-specific DNA binding. An important paralog of this gene is NKX1-1.

For Research Use Only