

BTK Polyclonal Antibody

Catalog No. E-AB-30680

Note: Centrifuge before opening to ensure complete recovery of vial contents.

Description

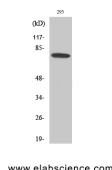
Reactivity	Human,Mouse,Rat,Monkey
Immunogen	Synthesized peptide derived from human Btk around the non-phosphorylation site of Tyr223.
Host	Rabbit
Isotype	IgG
Purification	Affinity purification
Conjugation	Unconjugated
Buffer	PBS with 0.02% sodium azide, 0.5% BSA and 50% glycerol, pH7.4

Applications

Recommended Dilution

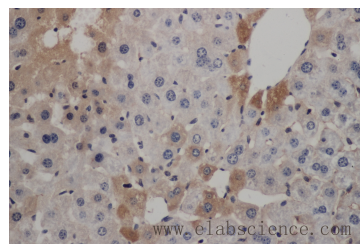
WB 1:500-1:2000,
IHC 1:100-1:300,
ELISA 1:20000

Data



www.elabscience.com

Western Blot analysis of 293T cells using Btk Polyclonal Antibody at dilution of 1:500.
Observed Mw:80kDa
Calculated Mw:76kDa



www.elabscience.com

Immunohistochemistry of paraffin-embedded Mouse liver using Btk antibody at dilution of 1:50

Preparation & Storage

Storage Store at -20°C. Avoid freeze / thaw cycles.

Background

Plays a crucial role in B-cell ontogeny. Transiently phosphorylates GTF2I on tyrosine residues in response to B-cell receptor cross-linking. Required for the formation of functional ARID3A DNA-binding complexes.

For Research Use Only