

CEBP alpha Polyclonal Antibody

Catalog No. E-AB-30686

Note: Centrifuge before opening to ensure complete recovery of vial contents.

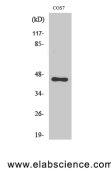
Description

| | |
|---------------------|--|
| Reactivity | Human,Mouse,Rat,Monkey |
| Immunogen | Synthesized peptide derived from human C/EBP α around the non-phosphorylation site of Thr226. |
| Host | Rabbit |
| Isotype | IgG |
| Purification | Affinity purification |
| Conjugation | Unconjugated |
| Buffer | PBS with 0.02% sodium azide, 0.5% BSA and 50% glycerol, pH7.4 |

Applications Recommended Dilution

WB 1:500-1:2000,
IHC 1:100-1:300,
ELISA 1:5000

Data



Western Blot analysis of COS7 cells with CEBP alpha
Polyclonal Antibody
Observed Mw:37kDa
Calculated Mw:38kDa

Preparation & Storage

Storage Store at -20°C. Avoid freeze / thaw cycles.

Background

C/EBP is a DNA-binding protein that recognizes two different motifs: the CCAAT homology common to many promoters and the enhanced core homology common to many enhancers.

For Research Use Only