

CEBP beta Polyclonal Antibody

Catalog No. E-AB-30687

Note: Centrifuge before opening to ensure complete recovery of vial contents.

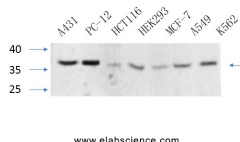
Description

Reactivity	Human, Mouse, Rat
Immunogen	Synthesized peptide derived from human C/EBP β around the non-phosphorylation site of Thr235.
Host	Rabbit
Isotype	IgG
Purification	Affinity purification
Conjugation	Unconjugated
Buffer	PBS with 0.02% sodium azide, 0.5% protective protein and 50% glycerol, pH7.4

Applications Recommended Dilution

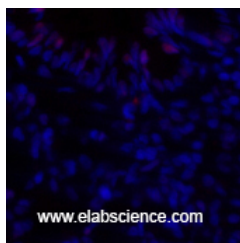
WB	1:500-1:2000
IHC	1:100-1:300
IF	1:50-1:200
ELISA	1:10000

Data

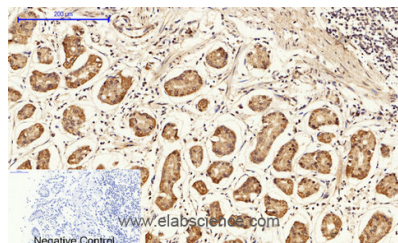


Western Blot analysis of various cells using CEBP beta Polyclonal Antibody at dilution of 1:1000.

Observed Mw:36kDa
Calculated Mw:36kDa



Immunofluorescence analysis of Rat lung tissue using CEBP beta Polyclonal Antibody at dilution of 1:200.



Immunohistochemistry of paraffin-embedded Human stomach tissue using CEBP beta Polyclonal Antibody at dilution of 1:200.

For Research Use Only

Preparation & Storage

Storage Store at -20°C. Avoid freeze / thaw cycles.

Background

Important transcriptional activator in the regulation of genes involved in immune and inflammatory responses. Specifically binds to an IL-1 response element in the IL-6 gene. NF-IL6 also binds to regulatory regions of several acute-phase and cytokines genes. It probably plays a role in the regulation of acute-phase reaction, inflammation and hemopoiesis. The consensus recognition site is 5'-T[TG]NNGNAA[TG]-3'. Functions in brown adipose tissue (BAT) differentiation.

For Research Use Only