

## CEBP delta/epsilon Polyclonal Antibody

**Catalog No.** E-AB-30690

**Note:** Centrifuge before opening to ensure complete recovery of vial contents.

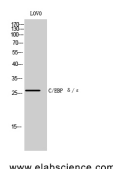
### Description

<b>Reactivity</b>	Human,Mouse,Rat
<b>Immunogen</b>	Synthesized peptide derived from the C-terminal region of human C/EBP δ/ε
<b>Host</b>	Rabbit
<b>Isotype</b>	IgG
<b>Purification</b>	Affinity purification
<b>Conjugation</b>	Unconjugated
<b>Buffer</b>	PBS with 0.02% sodium azide, 0.5% protective protein and 50% glycerol, pH7.4

### Applications Recommended Dilution

<b>WB</b>	1:500-1:2000
<b>IHC</b>	1:100-1:300
<b>IF</b>	1:200-1:1000
<b>ELISA</b>	1:20000

### Data



Western Blot analysis of LOVO cells using CEBP delta/epsilon Polyclonal Antibody at dilution of 1:500.

**Observed Mw:28kDa**  
**Calculated Mw:28kDa**

### Preparation & Storage

**Storage** Store at -20°C. Avoid freeze / thaw cycles.

### Background

CEBPD (CCAAT/Enhancer Binding Protein Delta) is a Protein Coding gene. Diseases associated with CEBPD include Leukoencephalopathy With Vanishing White Matter. Among its related pathways are Validated targets of C-MYC transcriptional repression and C-MYB transcription factor network. GO annotations related to this gene include transcription factor activity, sequence-specific DNA binding and RNA polymerase II core promoter proximal region sequence-specific DNA binding. An important paralog of this gene is CEBPB. CEBPE (CCAAT/Enhancer Binding Protein Epsilon) is a Protein Coding gene. Diseases associated with CEBPE include Specific Granule Deficiency and Neutrophil-Specific Granule Deficiency. Among its related pathways are Transcriptional misregulation in cancer. GO

### For Research Use Only

annotations related to this gene include transcription factor activity, sequence-specific DNA binding and sequence-specific DNA binding. An important paralog of this gene is CEBPA.