

CEBP epsilon Polyclonal Antibody

Catalog No. E-AB-30691

Note: Centrifuge before opening to ensure complete recovery of vial contents.

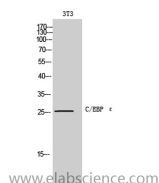
Description

Reactivity	Human,Mouse,Rat
Immunogen	Synthesized peptide derived from the C-terminal region of human C/EBP ε
Host	Rabbit
Isotype	IgG
Purification	Affinity purification
Buffer	PBS with 0.02% sodium azide,0.5% protective protein and 50% glycerol pH 7.4.

Applications Recommended Dilution

WB	1:500-1:2000
IHC	1:100-1:300
ELISA	1:10000

Data



Western Blot analysis of 3T3 cells with CEBP epsilon
Polyclonal Antibody
Observed Mw:26kDa
Calculated Mw:31kDa

Preparation & Storage

Storage Store at -20°C. Avoid freeze / thaw cycles.

Background

C/EBP are DNA-binding proteins that recognize two different motifs: the CCAAT homology common to many promoters and the enhanced core homology common to many enhancers.

For Research Use Only