

CEBP epsilon Polyclonal Antibody

Catalog No. E-AB-30692

Note: Centrifuge before opening to ensure complete recovery of vial contents.

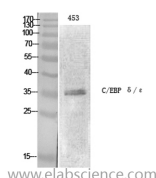
Description

Reactivity	Human
Immunogen	Synthesized peptide derived from human C/EBP ϵ around the non-phosphorylation site of T74.
Host	Rabbit
Isotype	IgG
Purification	Affinity purification
Buffer	PBS with 0.02% sodium azide, 0.5% protective protein and 50% glycerol pH 7.4.

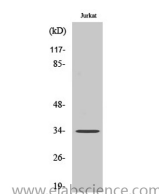
Applications Recommended Dilution

WB	1:500-1:2000
IHC	1:100-1:300
IF	1:200-1:1000
ELISA	1:5000

Data



Western Blot analysis of 453 cells with CEBP epsilon Polyclonal Antibody
Observed Mw:34kDa
Calculated Mw:31kDa



Western Blot analysis of Jurkat cells with CEBP epsilon Polyclonal Antibody

Preparation & Storage

Storage Store at -20°C. Avoid freeze / thaw cycles.

Background

C/EBP are DNA-binding proteins that recognize two different motifs: the CCAAT homology common to many promoters and the enhanced core homology common to many enhancers.

For Research Use Only