

C1QB Polyclonal Antibody

Catalog No. E-AB-30695

Note: Centrifuge before opening to ensure complete recovery of vial contents.

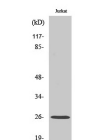
Description

Reactivity	Human
Immunogen	Synthesized peptide derived from the C-terminal region of human C1q-B
Host	Rabbit
Isotype	IgG
Purification	Affinity purification
Conjugation	Unconjugated
Buffer	PBS with 0.02% sodium azide, 0.5% protective protein and 50% glycerol, pH7.4

Applications Recommended Dilution

WB	1:500-1:2000
IHC	1:100-1:300
IF	1:200-1:1000
ELISA	1:40000

Data



www.elabscience.com

Western Blot analysis of Jurkat cells using C1QB
Polyclonal Antibody at dilution of 1:1000.

Observed Mw:28kDa
Calculated Mw:26kDa

Preparation & Storage

Storage Store at -20°C. Avoid freeze / thaw cycles.

Background

This gene encodes the B-chain polypeptide of serum complement subcomponent C1q, which associates with C1r and C1s to yield the first component of the serum complement system. C1q is composed of 18 polypeptide chains which include 6 A-chains, 6 B-chains, and 6 C-chains. Each chain contains an N-terminal collagen-like region and a C-terminal C1q globular domain. C1q deficiency is associated with lupus erythematosus and glomerulonephritis. C1QB (Complement C1q B Chain) is a Protein Coding gene. Diseases associated with C1QB include C1q Deficiency and Immunodeficiency Due To A Classical Component Pathway Complement Deficiency. Among its related pathways are Innate Immune System and Complement Pathway. GO annotations related to this gene include protein homodimerization activity. An important

For Research Use Only

paralog of this gene is C1QC.