

C1QBP Polyclonal Antibody

Catalog No. E-AB-30696

Note: Centrifuge before opening to ensure complete recovery of vial contents.

Description

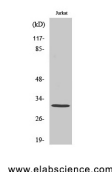
Reactivity	Human,Mouse,Rat
Immunogen	Synthesized peptide derived from the Internal region of human C1QBP
Host	Rabbit
Isotype	IgG
Purification	Affinity purification
Conjugation	Unconjugated
Buffer	PBS with 0.02% sodium azide, 0.5% protective protein and 50% glycerol, pH7.4

Applications

Recommended Dilution

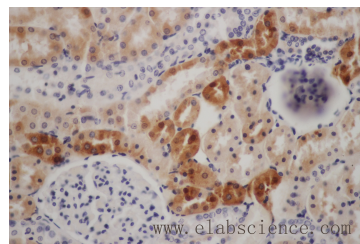
WB	1:500-1:2000
IHC	1:100-1:300
ELISA	1:40000

Data



www.elabscience.com

Western Blot analysis of Jurkat cells using C1QBP Polyclonal Antibody at dilution of 1:1000.
Observed Mw:32kDa
Calculated Mw:31kDa



www.elabscience.com

Immunohistochemistry of paraffin-embedded Rat kidney using C1QBP antibody at dilution of 1:50

Preparation & Storage

Storage Store at -20°C. Avoid freeze / thaw cycles.

Background

The human complement subcomponent C1q associates with C1r and C1s in order to yield the first component of the serum complement system. The protein encoded by this gene is known to bind to the globular heads of C1q molecules and inhibit C1 activation. This protein has also been identified as the p32 subunit of pre-mRNA splicing factor SF2, as well as a hyaluronic acid-binding protein.

For Research Use Only