

C1QL2 Polyclonal Antibody

Catalog No. E-AB-30697

Note: Centrifuge before opening to ensure complete recovery of vial contents.

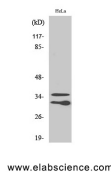
Description

| | |
|---------------------|--|
| Reactivity | Human,Mouse |
| Immunogen | Synthesized peptide derived from the C-terminal region of human C1qL2 |
| Host | Rabbit |
| Isotype | IgG |
| Purification | Affinity purification |
| Conjugation | Unconjugated |
| Buffer | PBS with 0.02% sodium azide, 0.5% protective protein and 50% glycerol, pH7.4 |

Applications Recommended Dilution

| | |
|--------------|--------------|
| WB | 1:500-1:2000 |
| IHC | 1:100-1:300 |
| ELISA | 1:10000 |

Data



Western Blot analysis of HeLa cells with C1qL2
Polyclonal Antibody.
Observed Mw:32-36kDa
Calculated Mw:30kDa

Preparation & Storage

Storage Store at -20°C. Avoid freeze / thaw cycles.

Background

C1QL2 (Complement C1q Like 2) is a Protein Coding gene. GO annotations related to this gene include identical protein binding. An important paralog of this gene is C1QL3.

For Research Use Only