

CA13 Polyclonal Antibody

Catalog No. E-AB-30705

Note: Centrifuge before opening to ensure complete recovery of vial contents.

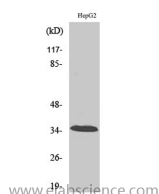
Description

Reactivity	Human,Mouse
Immunogen	Synthesized peptide derived from the Internal region of human CA XIII
Host	Rabbit
Isotype	IgG
Purification	Affinity purification
Buffer	PBS with 0.02% sodium azide,0.5% protective protein and 50% glycerol pH 7.4.

Applications Recommended Dilution

WB	1:500-1:2000
ELISA	1:10000

Data



Western Blot analysis of HepG2 cells with CA13
Polyclonal Antibody
Observed Mw:35kDa
Calculated Mw:29kDa

Preparation & Storage

Storage Store at -20°C. Avoid freeze / thaw cycles.

Background

Carbonic anhydrases (CAs) are a family of zinc metalloenzymes. For background information on the CA family, see MIM 114800.CA13 (Carbonic Anhydrase 13) is a Protein Coding gene. Among its related pathways are Nitrogen metabolism and Metabolism. GO annotations related to this gene include carbonate dehydratase activity. An important paralog of this gene is CA2.

For Research Use Only