

ABL1 Polyclonal Antibody

Catalog No. E-AB-30708

Note: Centrifuge before opening to ensure complete recovery of vial contents.

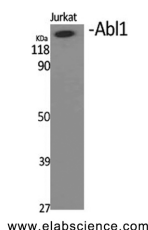
Description

Reactivity	Human, Mouse, Rat, Monkey
Immunogen	Synthesized peptide derived from human Abl1 around the non-phosphorylation site of Tyr204.
Host	Rabbit
Isotype	IgG
Purification	Affinity purification
Conjugation	Unconjugated
Buffer	PBS with 0.02% sodium azide, 0.5% BSA and 50% glycerol, pH7.4

Applications Recommended Dilution

WB 1:500-1:2000,
IHC 1:100-1:300,
ELISA 1:5000

Data



Western Blot analysis of Jurkat cells with Abl1
Polyclonal Antibody.
Observed Mw:123kDa
Calculated Mw:123kDa

Preparation & Storage

Storage Store at -20°C. Avoid freeze / thaw cycles.

Background

The ABL1 protooncogene encodes a cytoplasmic and nuclear protein tyrosine kinase that has been implicated in processes of cell differentiation, cell division, cell adhesion, and stress response. Activity of c-Abl protein is negatively regulated by its SH3 domain, and deletion of the SH3 domain turns ABL1 into an oncogene. The t(9;22) translocation results in the head-to-tail fusion of the BCR (MIM:151410) and ABL1 genes present in many cases of chronic myelogenous leukemia. The DNA-binding activity of the ubiquitously expressed ABL1 tyrosine kinase is regulated by CDC2-mediated phosphorylation, suggesting a cell cycle function for ABL1.

For Research Use Only