

Cadherin-like protein 26 Polyclonal Antibody

Catalog No. E-AB-30717

Note: Centrifuge before opening to ensure complete recovery of vial contents.

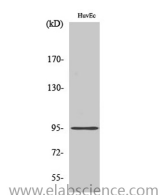
Description

| | |
|---------------------|---|
| Reactivity | Human |
| Immunogen | Synthesized peptide derived from the N-terminal region of human Cadherin-26 |
| Host | Rabbit |
| Isotype | IgG |
| Purification | Affinity purification |
| Buffer | PBS with 0.02% sodium azide, 0.5% protective protein and 50% glycerol pH 7.4. |

Applications Recommended Dilution

| | |
|--------------|--------------|
| WB | 1:500-1:2000 |
| IF | 1:200-1:1000 |
| ELISA | 1:10000 |

Data



Western Blot analysis of HuvEc cells with Cadherin-like protein 26 Polyclonal Antibody

Observed Mw:95kDa

Calculated Mw:95kDa

Preparation & Storage

Storage Store at -20°C. Avoid freeze / thaw cycles.

Background

This gene encodes a member of the cadherin protein family. Cadherins are a family of calcium-dependent adhesion molecules that mediate cell-cell adhesion in all solid tissues and modulate a wide variety of processes, including cell polarization, migration and differentiation. Cadherin domains occur as repeats in the extracellular region and are thought to contribute to the sorting of heterogeneous cell types and the maintenance of orderly structures such as epithelium. This protein is expressed in gastrointestinal epithelial cells and may be upregulated during allergic inflammation. This protein interacts with alpha integrins and may also be involved in leukocyte migration and adhesion. CDH26 (Cadherin 26) is a Protein Coding gene. Among its related pathways are Nanog in Mammalian ESC Pluripotency and ERK Signaling. GO annotations related to this gene include calcium ion binding. An important paralog of this gene is CDH2.

For Research Use Only