

Cadherin-7 Polyclonal Antibody

Catalog No. E-AB-30718

Note: Centrifuge before opening to ensure complete recovery of vial contents.

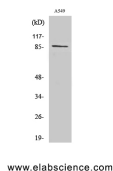
Description

Reactivity	Human, Mouse, Rat
Immunogen	Synthesized peptide derived from the C-terminal region of human Cadherin-7
Host	Rabbit
Isotype	IgG
Purification	Affinity purification
Conjugation	Unconjugated
Buffer	PBS with 0.02% sodium azide, 0.5% protective protein and 50% glycerol, pH7.4

Applications Recommended Dilution

WB	1:500-1:2000
IHC	1:100-1:300
IF	1:200-1:1000
ELISA	1:20000

Data



www.elabscience.com

Western Blot analysis of A549 cells using Cadherin-7
Polyclonal Antibody at dilution of 1:1000.

Observed Mw:87kDa
Calculated Mw:87kDa

Preparation & Storage

Storage Store at -20°C. Avoid freeze / thaw cycles.

Background

This gene encodes a type II classical cadherin of the cadherin superfamily. Alternative splicing results in multiple transcript variants, at least one of which encodes a preproprotein that is proteolytically processed to generate the mature glycoprotein. This calcium dependent cell-cell adhesion molecule is comprised of five extracellular cadherin repeats, a transmembrane region and a highly conserved cytoplasmic tail. Type II (atypical) cadherins are defined based on their lack of a histidine-alanine-valine (HAV) cell adhesion recognition sequence specific to type I cadherins. Cadherins mediate cell-cell binding in a homophilic manner, contributing to the sorting of heterogeneous cell types. Mutations in this gene may be associated with bipolar disease in human patients. This gene is present in a gene cluster on chromosome

For Research Use Only

18.CDH7 (Cadherin 7) is a Protein Coding gene. Among its related pathways are Cell junction organization and Nanog in Mammalian ESC Pluripotency. GO annotations related to this gene include calcium ion binding. An important paralog of this gene is CDH20.