

Cadherin-8 Polyclonal Antibody

Catalog No. E-AB-30719

Note: Centrifuge before opening to ensure complete recovery of vial contents.

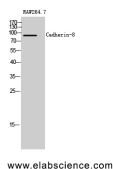
Description

Reactivity	Human, Mouse, Rat
Immunogen	Synthesized peptide derived from the Internal region of human Cadherin-8
Host	Rabbit
Isotype	IgG
Purification	Affinity purification
Conjugation	Unconjugated
Buffer	PBS with 0.02% sodium azide, 0.5% protective protein and 50% glycerol, pH7.4

Applications Recommended Dilution

WB	1:500-1:2000
IHC	1:100-1:300
IF	1:200-1:1000
ELISA	1:20000

Data



Western Blot analysis of RAW264.7 cells with
Cadherin-8 Polyclonal Antibody.

Observed Mw:90kDa
Calculated Mw:88kDa

Preparation & Storage

Storage Store at -20°C. Avoid freeze / thaw cycles.

Background

Cadherins are calcium-dependent cell adhesion proteins. They preferentially interact with themselves in a homophilic manner in connecting cells; cadherins may thus contribute to the sorting of heterogeneous cell types.

For Research Use Only