

CAPN11 Polyclonal Antibody

Catalog No. E-AB-30725

Note: Centrifuge before opening to ensure complete recovery of vial contents.

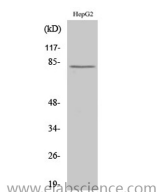
Description

Reactivity	Human
Immunogen	Synthesized peptide derived from the Internal region of human Calpain 11
Host	Rabbit
Isotype	IgG
Purification	Affinity purification
Buffer	PBS with 0.02% sodium azide, 0.5% protective protein and 50% glycerol pH 7.4.

Applications Recommended Dilution

WB	1:500-1:2000
ELISA	1:5000

Data



Western Blot analysis of HepG2 cells with CAPN11
Polyclonal Antibody
Observed Mw:81kDa
Calculated Mw:81kDa

Preparation & Storage

Storage Store at -20°C. Avoid freeze / thaw cycles.

Background

Calpains constitute a family of intracellular calcium-dependent cysteine proteases. There are eight members in this superfamily. They consist of a variable 80 kDa subunit and an invariant 30 kDa subunit. This calpain protein appears to have protease activity and calcium-binding ability. A similar mouse protein may play a functional role in spermatogenesis and in the regulation of calcium-dependent signal transduction events during meiosis. CAPN11 (Calpain 11) is a Protein Coding gene. Among its related pathways are Degradation of the extracellular matrix and Arrhythmogenic right ventricular cardiomyopathy (ARVC). GO annotations related to this gene include calcium ion binding and calcium-dependent cysteine-type endopeptidase activity. An important paralog of this gene is CAPN1.

For Research Use Only