

CAPN12 Polyclonal Antibody

Catalog No. E-AB-30726

Note: Centrifuge before opening to ensure complete recovery of vial contents.

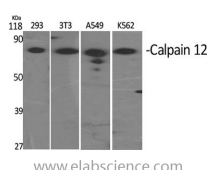
Description

Reactivity	Human
Immunogen	Synthesized peptide derived from the Internal region of human Calpain 12
Host	Rabbit
Isotype	IgG
Purification	Affinity purification
Buffer	PBS with 0.02% sodium azide, 0.5% protective protein and 50% glycerol pH 7.4.

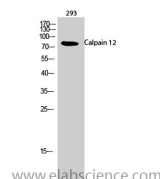
Applications Recommended Dilution

WB	1:500-1:2000
ELISA	1:5000

Data



Western Blot analysis of various cells with CAPN12 Polyclonal Antibody
Observed Mw:80kDa
Calculated Mw:81kDa



Western Blot analysis of 293 cells with CAPN12 Polyclonal Antibody

Preparation & Storage

Storage Store at -20°C. Avoid freeze / thaw cycles.

Background

The calpains, calcium-activated neutral proteases, are nonlysosomal, intracellular cysteine proteases. The mammalian calpains include ubiquitous, stomach-specific, and muscle-specific proteins. The ubiquitous enzymes consist of heterodimers with distinct large, catalytic subunits associated with a common small, regulatory subunit. This gene encodes a member of the calpain large subunit family. CAPN12 (Calpain 12) is a Protein Coding gene. Diseases associated with CAPN12 include Autosomal Recessive Congenital Ichthyosis. Among its related pathways are Degradation of the extracellular matrix and Apoptosis Pathway. GO annotations related to this gene include calcium ion binding and calcium-dependent cysteine-type endopeptidase activity. An important paralog of this gene is CAPN1.

For Research Use Only