

CCL13 Polyclonal Antibody

Catalog No. E-AB-52140

Note: Centrifuge before opening to ensure complete recovery of vial contents.

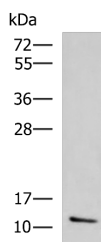
Description

Reactivity	Human
Immunogen	Fusion protein of human CCL13
Host	Rabbit
Isotype	IgG
Purification	Antigen affinity purification
Conjugation	Unconjugated
Buffer	PBS with 0.05% NaN ₃ and 40% Glycerol, pH7.4

Applications Recommended Dilution

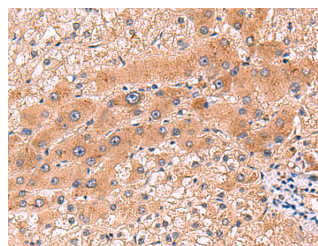
WB	1:500-1:2000
IHC	1:80-1:400

Data



Western blot analysis of Human ileum tissue lysate using CCL13 Polyclonal Antibody at dilution of 1:800

Observed Mw: Refer to figures
Calculated Mw: 11 kDa



Immunohistochemistry of paraffin-embedded Human liver cancer tissue using CCL13 Polyclonal Antibody at dilution of 1:90 (x200)

Preparation & Storage

Storage Store at -20°C. Avoid freeze / thaw cycles.

Background

This gene is one of several Cys-Cys (CC) cytokine genes clustered on the q-arm of chromosome 17. Cytokines are a family of secreted proteins involved in immunoregulatory and inflammatory processes. The CC cytokines are proteins characterized by two adjacent cysteines. The cytokine encoded by this gene displays chemotactic activity for monocytes, lymphocytes, basophils and eosinophils, but not neutrophils. This chemokine plays a role in accumulation of leukocytes during inflammation. It may also be involved in the recruitment of monocytes into the arterial wall during atherosclerosis.

For Research Use Only