

## CUL5 Polyclonal Antibody

Catalog No. E-AB-52146

**Note:** Centrifuge before opening to ensure complete recovery of vial contents.

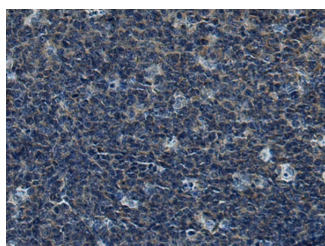
### Description

<b>Reactivity</b>	Human, Mouse, Rat
<b>Immunogen</b>	Fusion protein of human CUL5
<b>Host</b>	Rabbit
<b>Isotype</b>	IgG
<b>Purification</b>	Antigen affinity purification
<b>Conjugation</b>	Unconjugated
<b>Buffer</b>	PBS with 0.05% NaN <sub>3</sub> and 40% Glycerol,pH7.4

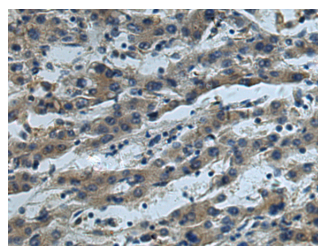
### Applications Recommended Dilution

**IHC** 1:50-1:200

### Data



Immunohistochemistry of paraffin-embedded Human tonsil tissue using CUL5 Polyclonal Antibody at dilution of 1:55(×200)



Immunohistochemistry of paraffin-embedded Human liver cancer tissue using CUL5 Polyclonal Antibody at dilution of 1:55(×200)

### Preparation & Storage

**Storage** Store at -20°C. Avoid freeze / thaw cycles.

### Background

CUL5 (Cullin 5) is a Protein Coding gene. Among its related pathways are Innate Immune System and CDK-mediated phosphorylation and removal of Cdc6. Gene Ontology (GO) annotations related to this gene include protein heterodimerization activity and ubiquitin protein ligase binding. An important paralog of this gene is CUL1.

### For Research Use Only