

CAMKK2 Polyclonal Antibody

Catalog No. E-AB-30731

Note: Centrifuge before opening to ensure complete recovery of vial contents.

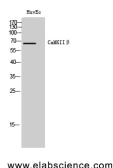
Description

Reactivity	Human,Mouse,Rat
Immunogen	Synthesized peptide derived from the Internal region of human CaMKIIβ
Host	Rabbit
Isotype	IgG
Purification	Affinity purification
Conjugation	Unconjugated
Buffer	PBS with 0.02% sodium azide, 0.5% protective protein and 50% glycerol, pH7.4

Applications Recommended Dilution

WB	1:500-1:2000
IHC	1:100-1:300
ELISA	1:10000

Data



Western Blot analysis of HuvEc cells with CaMKK2
Polyclonal Antibody.
Observed Mw:65kDa
Calculated Mw:65kDa

Preparation & Storage

Storage Store at -20°C. Avoid freeze / thaw cycles.

Background

Calcium/calmodulin-dependent protein kinase belonging to a proposed calcium-triggered signaling cascade involved in a number of cellular processes. Isoform 1, isoform 2 and isoform 3 phosphorylate CAMK1 and CAMK4. Isoform 3 phosphorylates CAMK1D. Isoform 4, isoform 5 and isoform 6 lacking part of the calmodulin-binding domain are inactive. Seems to be involved in hippocampal activation of CREB1.

For Research Use Only