

## LDHD Polyclonal Antibody

**Catalog No.** E-AB-52194

*Note:* Centrifuge before opening to ensure complete recovery of vial contents.

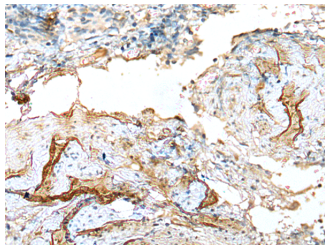
### Description

<b>Reactivity</b>	Human
<b>Immunogen</b>	Fusion protein of human LDHD
<b>Host</b>	Rabbit
<b>Isotype</b>	IgG
<b>Purification</b>	Antigen affinity purification
<b>Conjugation</b>	Unconjugated
<b>Buffer</b>	PBS with 0.05% NaN <sub>3</sub> and 40% Glycerol,pH7.4

### Applications Recommended Dilution

<b>IHC</b>	1:50-1:350
------------	------------

### Data



Immunohistochemistry of paraffin-embedded Human cervical cancer tissue using LDHD Polyclonal Antibody at dilution of 1:120(×200)

### Preparation & Storage

**Storage** Store at -20°C. Avoid freeze / thaw cycles.

### Background

LDHD belongs to the D-isomer specific 2-hydroxyacid dehydrogenase family. D-lactate and D-glycerate dehydrogenase activities have been found in a similar protein in yeast. Alternative splicing occurs at this locus and two transcript variants encoding distinct isoforms have been identified.

### For Research Use Only