

CARD10 Polyclonal Antibody

Catalog No. E-AB-30737

Note: Centrifuge before opening to ensure complete recovery of vial contents.

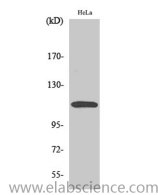
Description

Reactivity	Human,Mouse
Immunogen	Synthesized peptide derived from the Internal region of human CARD 10
Host	Rabbit
Isotype	IgG
Purification	Affinity purification
Buffer	PBS with 0.02% sodium azide,0.5% protective protein and 50% glycerol pH 7.4.

Applications Recommended Dilution

WB	1:500-1:2000
IHC	1:100-1:300
IF	1:200-1:1000
ELISA	1:10000

Data



Western Blot analysis of HeLa cells with CARD10
Polyclonal Antibody
Observed Mw:120kDa
Calculated Mw:116kDa

Preparation & Storage

Storage Store at -20°C. Avoid freeze / thaw cycles.

Background

Activates NF-kappa-B via BCL10 and IKK.

For Research Use Only