

## CTF1 Polyclonal Antibody

Catalog No. E-AB-30740

**Note:** Centrifuge before opening to ensure complete recovery of vial contents.

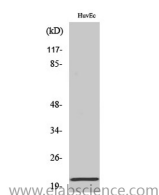
### Description

<b>Reactivity</b>	Human,Mouse,Rat
<b>Immunogen</b>	Synthesized peptide derived from the N-terminal region of human Cardiotrophin-1.
<b>Host</b>	Rabbit
<b>Isotype</b>	IgG
<b>Purification</b>	Affinity purification
<b>Buffer</b>	PBS with 0.02% sodium azide,0.5% protective protein and 50% glycerol pH 7.4.

### Applications Recommended Dilution

<b>WB</b>	1:500-1:2000
<b>IHC</b>	1:100-1:300
<b>ELISA</b>	1:40000

### Data



Western Blot analysis of HuvEc cells with CTF1  
Polyclonal Antibody  
**Observed Mw:21kDa**  
**Calculated Mw:21kDa**

### Preparation & Storage

**Storage** Store at -20°C. Avoid freeze / thaw cycles.

### Background

The protein encoded by this gene is a secreted cytokine that induces cardiac myocyte hypertrophy in vitro. It has been shown to bind and activate the ILST/gp130 receptor. Two transcript variants encoding different isoforms have been found for this gene. CTF1 (Cardiotrophin 1) is a Protein Coding gene. Diseases associated with CTF1 include Neonatal Stroke and Hypertensive Heart Disease. Among its related pathways are NFAT and Cardiac Hypertrophy and Innate Immune System. GO annotations related to this gene include cytokine activity and leukemia inhibitory factor receptor binding.

### For Research Use Only