

## DYNLL2 Polyclonal Antibody

Catalog No. E-AB-52262

**Note:** Centrifuge before opening to ensure complete recovery of vial contents.

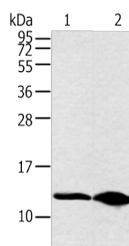
### Description

<b>Reactivity</b>	Human, Mouse, Rat
<b>Immunogen</b>	Full length fusion protein
<b>Host</b>	Rabbit
<b>Isotype</b>	IgG
<b>Purification</b>	Antigen affinity purification
<b>Conjugation</b>	Unconjugated
<b>Buffer</b>	PBS with 0.05% NaN <sub>3</sub> and 40% Glycerol, pH7.4

### Applications Recommended Dilution

**WB** 1:500-1:2000

### Data



Western blot analysis of HeLa cell and human fetal brain tissue using DYNLL2 Polyclonal Antibody at dilution of 1:250

**Observed Mw: Refer to figures**  
**Calculated Mw: 10 kDa**

### Preparation & Storage

**Storage** Store at -20°C. Avoid freeze / thaw cycles.

### Background

Dynein light chain 2, cytoplasmic is a protein that in humans is encoded by the DYNLL2 gene. Acts as one of several non-catalytic accessory components of the cytoplasmic dynein 1 complex that are thought to be involved in linking dynein to cargos and to adapter proteins that regulate dynein function. Cytoplasmic dynein 1 acts as a motor for the intracellular retrograde motility of vesicles and organelles along microtubules.

### For Research Use Only