

MPC1 Polyclonal Antibody

Catalog No. E-AB-52267

Note: Centrifuge before opening to ensure complete recovery of vial contents.

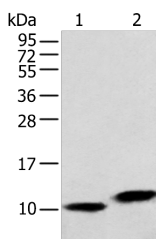
Description

Reactivity	Human, Mouse, Rat
Immunogen	Full length fusion protein
Host	Rabbit
Isotype	IgG
Purification	Antigen affinity purification
Conjugation	Unconjugated
Buffer	PBS with 0.05% NaN ₃ and 40% Glycerol,pH7.4

Applications Recommended Dilution

WB 1:500-1:2000,
ELISA
1:5000-1:10000

Data



Western blot analysis of Hela cell and Human fetal liver tissue using MPC1 Polyclonal Antibody at dilution of 1:250

Observed Mw:Refer to figures
Calculated Mw:12 kDa

Preparation & Storage

Storage Store at -20°C. Avoid freeze / thaw cycles.

Background

The protein encoded by this gene is part of an MPC1/MPC2 heterodimer that is responsible for transporting pyruvate into mitochondria. The encoded protein is found in the inner mitochondrial membrane. Defects in this gene are a cause of mitochondrial pyruvate carrier deficiency. Several transcript variants, some protein coding and one non-protein coding, have been found for this gene.

For Research Use Only