

CSNK2A1 Polyclonal Antibody

Catalog No. E-AB-30744

Note: Centrifuge before opening to ensure complete recovery of vial contents.

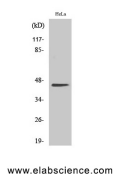
Description

| | |
|---------------------|---|
| Reactivity | Human,Mouse,Rat |
| Immunogen | Synthesized peptide derived from human Casein Kinase II α around the non-phosphorylation site of Tyr255. |
| Host | Rabbit |
| Isotype | IgG |
| Purification | Affinity purification |
| Conjugation | Unconjugated |
| Buffer | PBS with 0.02% sodium azide, 0.5% protective protein and 50% glycerol, pH7.4 |

Applications Recommended Dilution

| | |
|--------------|--------------|
| WB | 1:500-1:2000 |
| IHC | 1:100-1:300 |
| ELISA | 1:10000 |

Data



Western Blot analysis of HeLa cells with CSNK2A1
Polyclonal Antibody
Observed Mw:45kDa
Calculated Mw:45kDa

Preparation & Storage

Storage Store at -20°C. Avoid freeze / thaw cycles.

Background

Casein kinases are operationally defined by their preferential utilization of acidic proteins such as caseins as substrates. The alpha and alpha' chains contain the catalytic site. Participates in Wnt signaling. CK2 phosphorylates 'Ser-392' of p53/TP53 following UV irradiation.

For Research Use Only